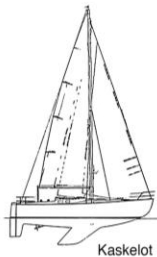


The Peter Bruun Spækhugger

Design story:

- 1968 Peter Bruun designs and builds the prototype Spækhugger (Killer whale).
- 1969 The prototype sails successfully in the Sjælland Rundt regatta.
- 1970 The design is reworked into a production cruising boat.
- 1971 One of the first production boats is shown at the Charlottenborg Design Exhibition.
- 1971 Kaskelot (Sperm whale), a much larger version of the boat, is designed and the first boats are built.
- 1971 Spækhuggers are racing against each others on the Øresund. The Danish Sailing Authority approves and keeps a control on the boats and their racing equipment.
- 1974 Grinde (Pilot whale) is designed with lines and ideas similar to the Spækhugger.
- 1977 Marsvin (Porpoise) is designed.
- 1977 Peter Bruun receives the ID design prize for his Grinde.
- 1989 The Danish Sailing Authority allows the boats to compete for an official Danish Championship.
- 2000 More than 400 Spækhuggers are now sailing in Scandinavia and Northern Europe.
- 2019 425 boats have been built, and many older boats are being restored by a new generation of owners.
- 2020 Members of the owners association get together for a 50 year celebration of the Spækhugger.



Kaskelot

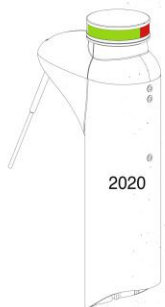
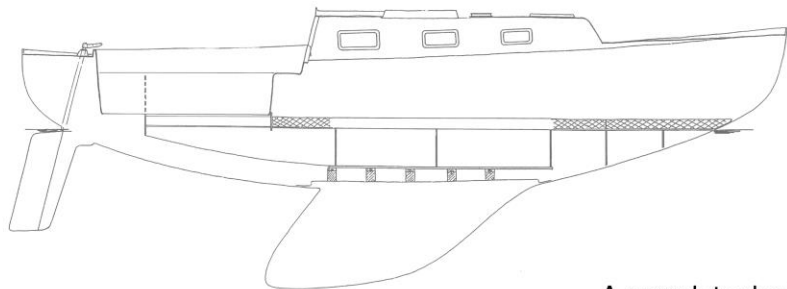


Grinde

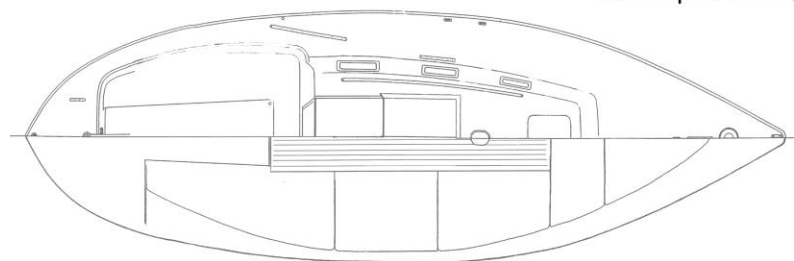


Marsvin

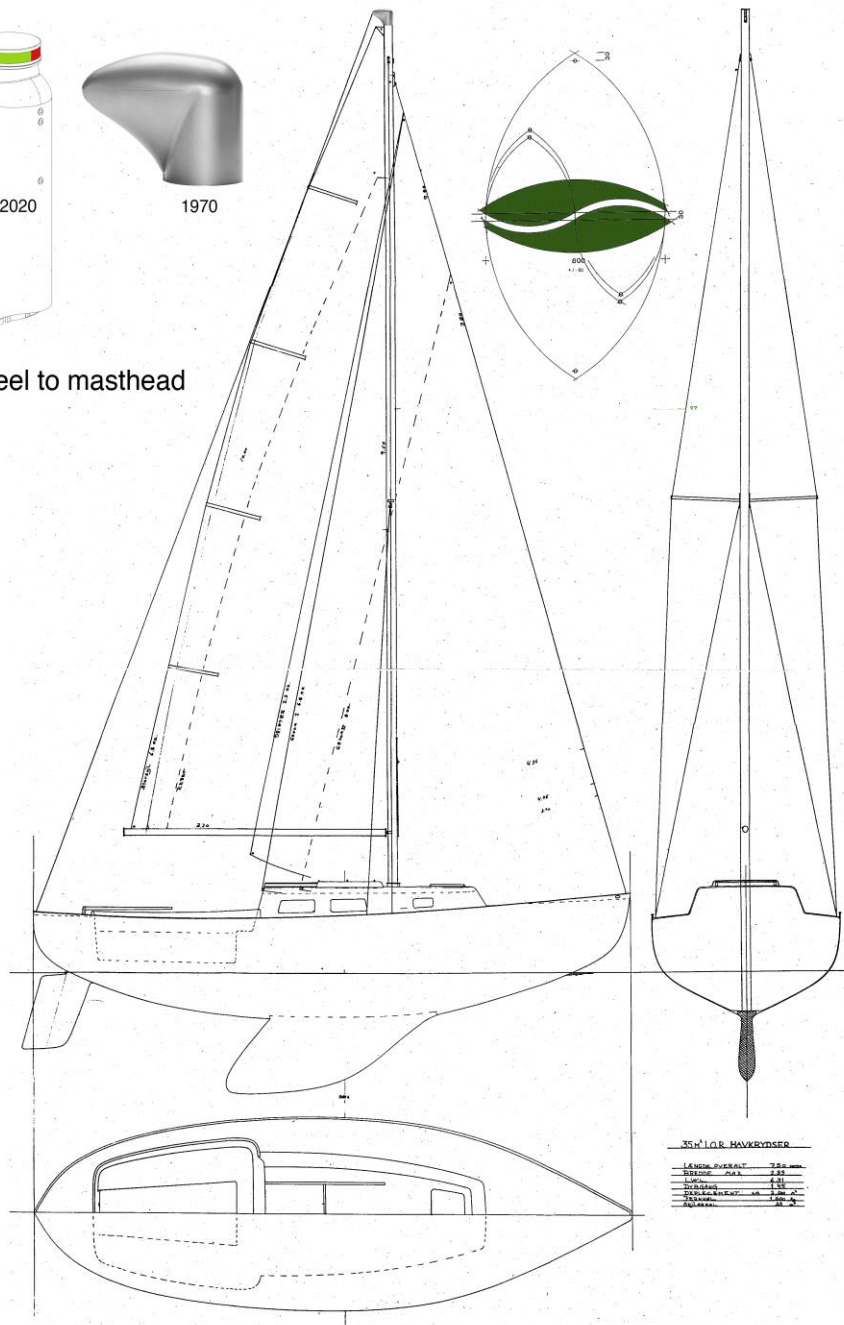
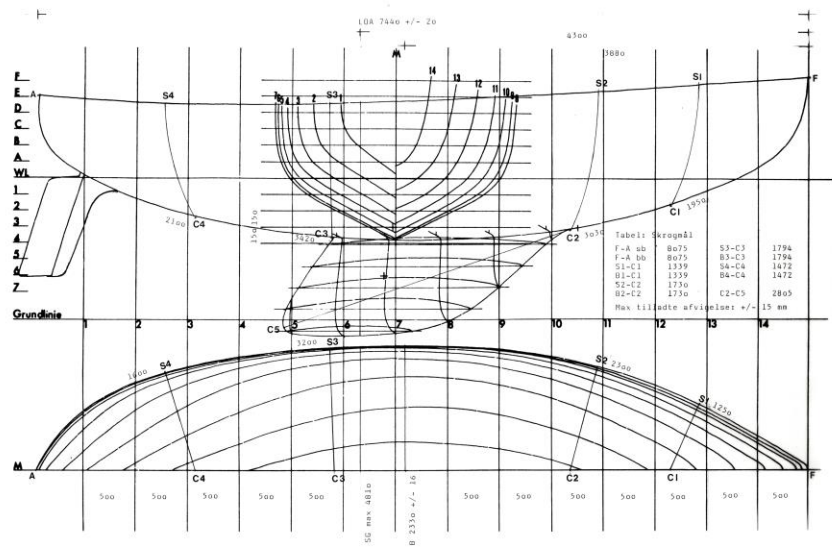




A complete design from keel to masthead



50 centimeter



35'10" HAVRYNTER

LÅNGD ÖVERALLT	7,20 m
BREDD ÖVERALLT	2,20 m
LÅNGD DECK	6,30 m
BREDD DECK	2,20 m
DECKHÖJD ÖVER DECK	1,20 m
DECKHÖJD ÖVER VATTENLINJE	1,20 m
DECKHÖJD ÖVER VATTENLINJE	1,20 m
DECKHÖJD ÖVER VATTENLINJE	1,20 m